



2N® EasyGate IP Web Configuration Utility



Installation Guide



Content

page 3

Description

page 3

Installation

page 5

Usage

Description

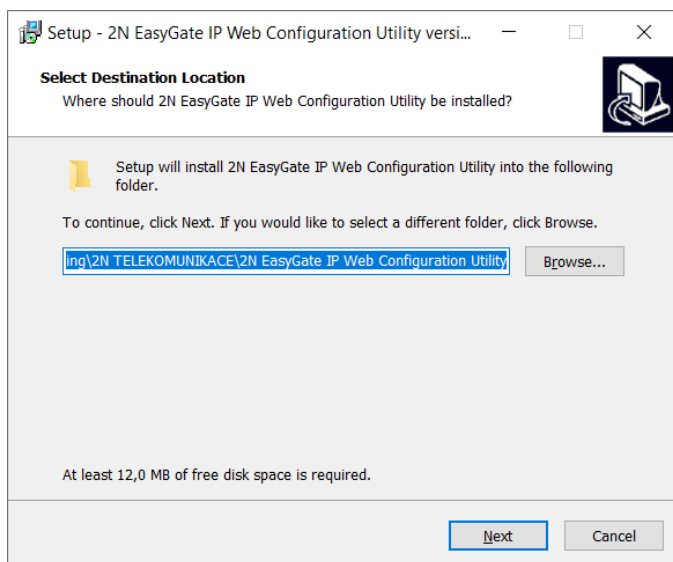
To configure **2N® EasyGate IP** without the **2N® Elevator Center** cloud service, connect the device to a PC via a USB cable using the **2N® EasyGate - Web Configuration Utility**, available for free download at 2n.cz.

2N® EasyGate IP - Web Configuration Utility is used for automatic opening of the **2N® EasyGate IP** web configuration page, which is connected via a local USB port.

Just a single active USB connection is supported. If multiple devices are connected, keep just one 2N® EasyGate IP connected.

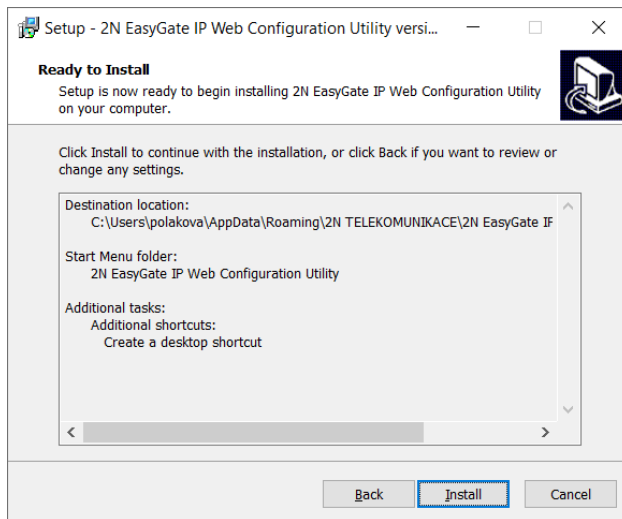
Installation

Double click to start the 2N_EasyGate_IP_Web_Configuration_UTILITY_Setup (. exe) file.

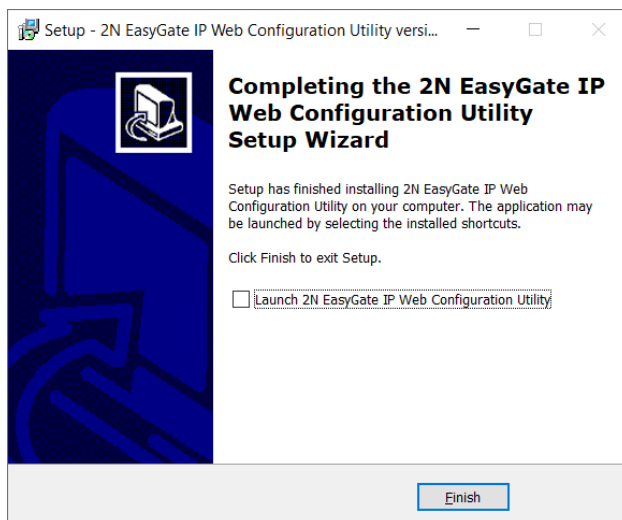


Select the target folder for the utility installation.
Select Start Menu (optional).
Select other available tasks – create a shortcut icon (optional).

Installation



Confirm the installation.



Click Finish to complete the installation.

Usage

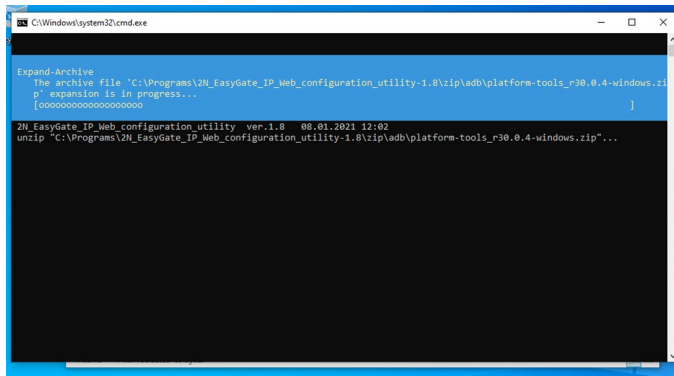
Connect the adapter to **2N® EasyGate IP**.

Turn on **2N® EasyGate IP**.

Connect **2N® EasyGate IP** to a PC using a USB (USB-A / USB-C) cable.

Open the installed application 2N® EasyGate IP Web Configuration Utility.

The required adb tools are extracted in the first run:



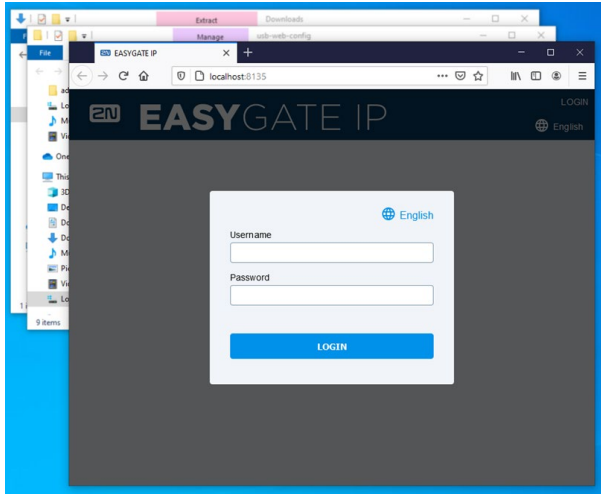
```
C:\Windows\system32\cmd.exe

Expand-Archive
The archive file 'C:\Programs\2N_EasyGate_IP_Web_configuration_utility-1.8\zip\adb\platform-tools_r30.0.4-windows.zip'
is expanding...
[oooooooooooooooooooo]

2N_EasyGate_IP_Web_configuration_utility ver:1.8 08.01.2021 12:02
unzip "C:\Programs\2N_EasyGate_IP_Web_configuration_utility-1.8\zip\adb\platform-tools_r30.0.4-windows.zip"...
```

Usage

If **2N® EasyGate IP** is already connected via USB, its web page will be displayed automatically:



If **2N® EasyGate IP** is disconnected at this moment, nothing will happen. To reopen the configuration web page after USB reconnection or **2N® EasyGate IP** restart, for example, execute the run.cmd file again.

For the first login, enter **Admin** as the username and **2n** as the password. You will be prompted to change the default password upon your web interface login to be able to edit configuration.

Make sure that your password has 8 characters at least including one lower-case letter, one upper-case letter and one digit.